



15F3340

Flyaway Towbar



* Towbar shown with
B737 Head

Building Quality Ground Support Products Since 1961

- PN 15F3340 is the body only, see page 2 for head options
- This flyaway towbar is available with any quick change head
- Towbar halves are secured by a removable pin secured by a chain
- Towbar made of high strength steel tube
- Durable powder coat finish
- Extra set of shear bolts included

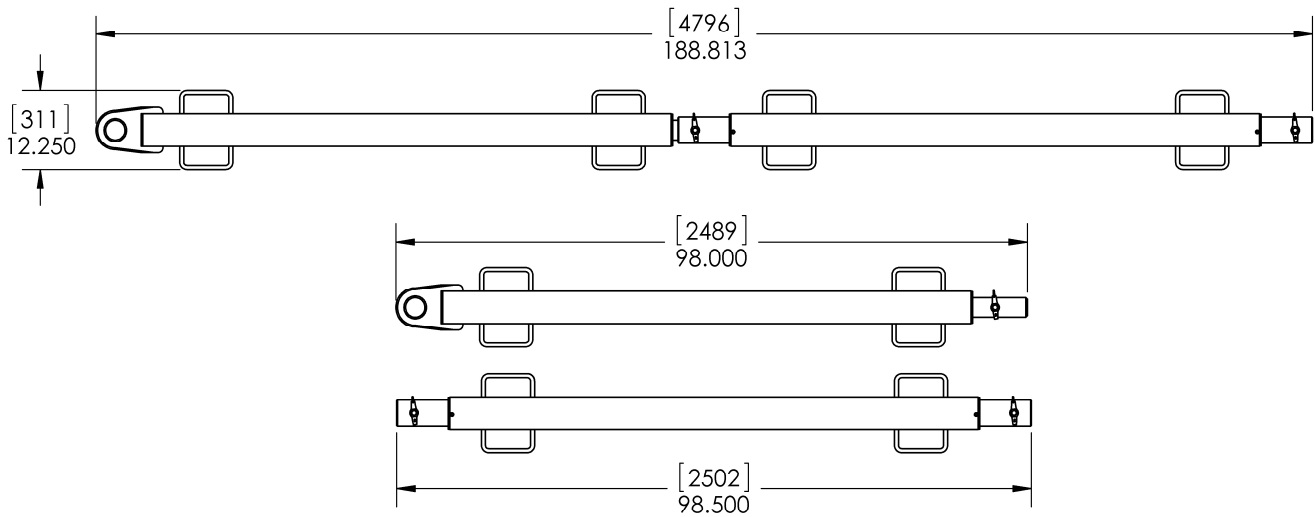
CLYDE

Clyde Machines
P.O. Box 194
1150 Hwy 55 N.
Glenwood, MN 56334 USA
(320) 634-4504
(320) 634-4506 Fax

www.clydemachines.com

15F3340

Flyaway Towbar



Shipping Information

- Weight - 145 lbs
 - Weight w/head - 240 lbs
- Crated Dimensions:
- Weight - 500 lbs
 - Weight w/head - 590 lbs.
 - Height - 16"
 - Width - 28"
 - Length - 220"

Head options:

- 15F2518 A300/310, B727
- 15F2524 B737 100-300
- 15F2892 B737 100-900
- 15F2772 B737 600-900
- 15F2514 A320
- 15F2519 B757

CLYDE

Clyde Machines
P.O. Box 194
1150 Hwy 55 N.
Glenwood, MN 56334 USA
(320) 634-4504
(320) 634-4506 Fax

www.clydemachines.com